

▶ PROFESSIONAL
PEST MANAGEMENT

**DEMAND
THE BEST.
KILL THE
CALLBACK.**

 **Demand[®]100CS**
Insecticide

 **Demand[®]Duo**
Insecticide



FOR LIFE UNINTERRUPTED™

syngenta[®]

®

DEMAND® DUO is a combination of two actives in a ZC formulation that makes them more powerful than they would be on their own. DEMAND® DUO hits hard with a fast knockdown and really goes the distance with up to 90 days residual control. It controls a wide range of pests and can be used indoors or outdoors on a variety of surfaces.



Product Details

- ▶ **Lambda-cyhalothrin (38 g/L) with Thiamethoxam (125 g/L)**
- ▶ **Unique ZC formulation (combination of micro-encapsulation featuring iCAP™ technology and an suspension concentrate formulation)**
- ▶ **Group 3A | 4A Insecticide**

Labelled Pests

- ▶ **Ants, Bedbugs, Cockroaches, Fleas, Flies, Portuguese Millipedes, Paper Nest Wasps, Silverfish and Spiders**

Pack/Shipper Details

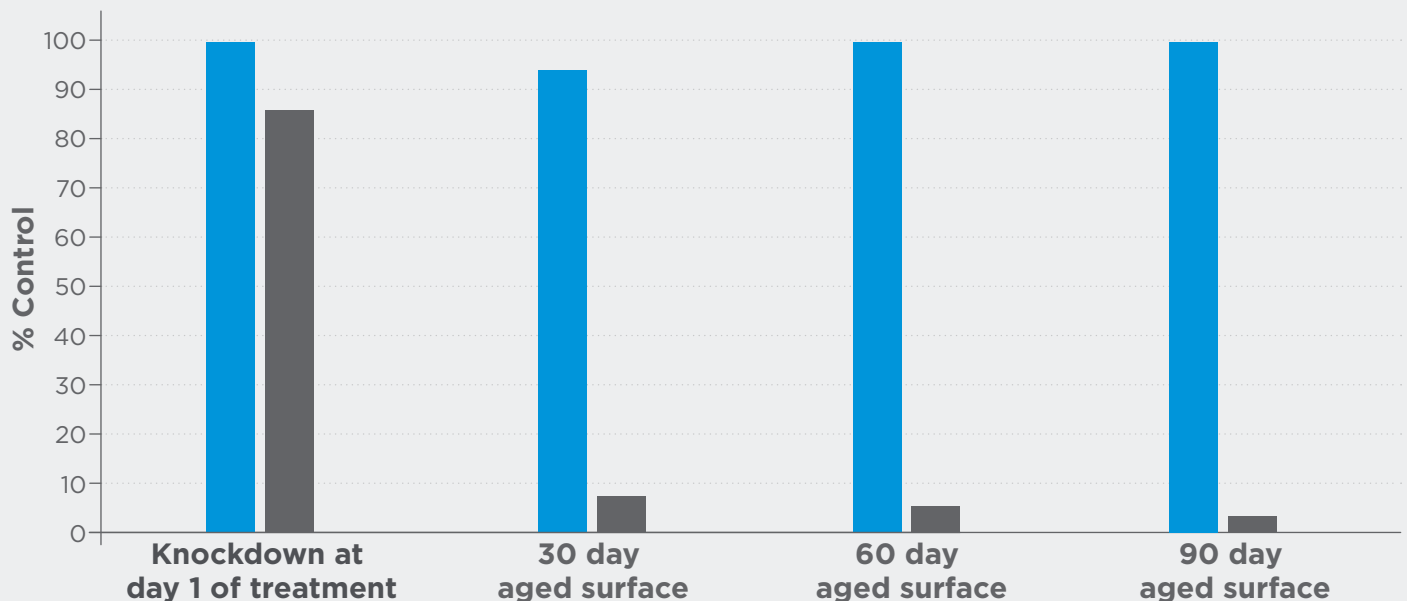
- ▶ **8 x 750 mL bottles per shipper**

Rate Tip

- ▶ **Clear-out and maintenance mix rates (4 mL - 8 mL / 1 L)**

Assessment at 48hr German Cockroaches

German cockroaches exposed to the treated surface* for 10 minutes then removed and assessed for mortality



DEMAND® DUO 40 mL/5 L **Temprid®** 40 mL/5 L

*Temprid® is a Registered Trademark of Bayer Australia Ltd. *Surface rubber wall mat. STUDY No: Wyatt-Evens (2011) Study Number USVL010242011_Laboratory trial.

DEMAND[®] 100CS is a cost-effective, long-lasting general pest spray that can be used indoors and outdoors including foliage. When applied to shrubs, DEMAND[®] 100CS controls mosquitoes for up to 14 weeks. DEMAND[®] 100CS also controls ants, cockroaches, fleas, flies, silverfish and spiders for up to 12 months indoors and 3 months outdoors.



Product Details

- ▶ Lambda-cyhalothrin (100 g/L)
- ▶ Micro-encapsulation formulation featuring iCAP™ Technology
- ▶ Group 3A Insecticide
- ▶ Use instead of a bifenthrin-based product

Labelled Pests

- ▶ Ants, Cockroaches, Fleas, Flies, Mosquitoes, Silverfish and Spiders

Pack/Shipper Details

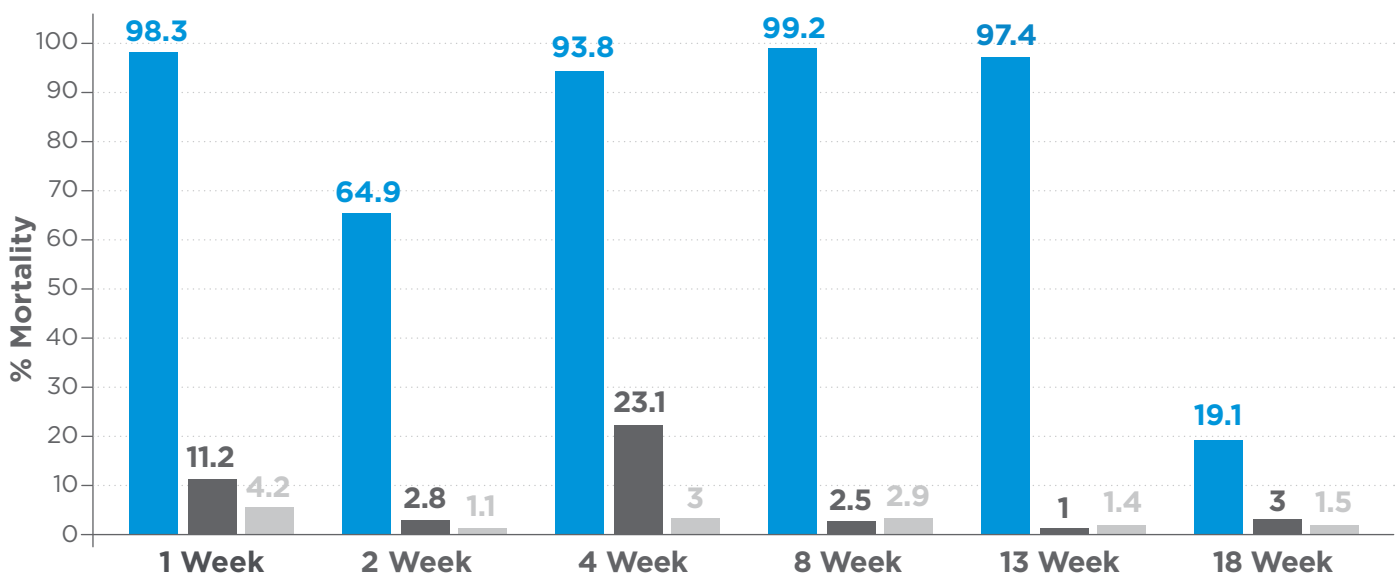
- ▶ 12 x 1 L bottles per shipper

Rate Tip

- ▶ Range of rates mix for knockdown or maintenance application (2.5 mL – 5 mL / 1 L mix)

Outdoor surfaces up to 3 months

Pharaoh Ant after 30 sec exposure to treated cement - mortality recorded after 1 hour



DEMAND[®] 100CS
50 mL/10 L/200 m²
(0.025 g/ai/m²)

Bifenthrin
(0.025 g/ai/m²)

Untreated control

Ref: PDB 2009.1570.2 Compo

Demand[®] Duo

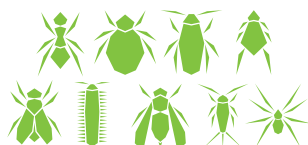
Insecticide

Features and benefits

- ▶ Powerful complementary modes of action
- ▶ Rapid knockdown and long lasting
- ▶ Broad pest spectrum including hard to control pests
- ▶ Easy-to-use low odour and non-staining unique formulation
- ▶ Versatile use indoors and out, on porous and non-porous surfaces
- ▶ HACCP certified

Labelled pests

Ants, Bedbugs, Cockroaches, Fleas, Flies, Portuguese Millipedes, Paper Nest Wasps, Silverfish and Spiders



Scan or click QR code to visit web page

Active: lambda-cyhalothrin (38 g/L), thiamethoxam (125 g/L)

Pack: 750 mL



Demand[®] 100CS

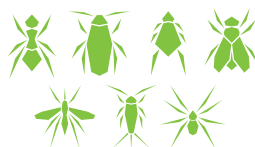
Insecticide

Features and benefits

- ▶ Residual control of up to 12 months indoors and 3 months outdoors
- ▶ When applied to vegetation controls mosquitoes for up to 14 weeks
- ▶ Versatile use indoors and out, on a range of surfaces and can be applied to foliage
- ▶ Water based, non-staining and low-odour formulation
- ▶ HACCP certified

Labelled pests

Ants, Cockroaches, Fleas, Flies, Mosquitoes, Silverfish and Spiders



Scan or click QR code to visit web page

Active: lambda-cyhalothrin (100 g/L)

Pack: 1 L



NO=No odour, NS=Non-staining, IO=Indoors & outdoors, BS=Broad spectrum

syngenta[®]

For more information please call Syngenta Customer Service on 1800 022 035 or visit www.syngentappm.com.au

Syngenta Australia Pty Ltd, Level 1, 2 Lyonpark Road, Macquarie Park NSW 2113. ABN 33 002 933 717. ®Registered trademark of a Syngenta Group Company. ™Trademark of a Syngenta Group Company. All products written in uppercase are registered trademarks of a Syngenta Group Company. © 2022 Syngenta. Always read the full label for directions for use. SB 22-108.